



# Youth Committee

**April 11, 2025**





# Partner Updates

Victoria Rodriguez, Director of Workforce Services



# **Jennifer Benavides, District Director of P-TECH Programs & Alamo Academies High School Programs Alamo Colleges District**

---



High School Programs

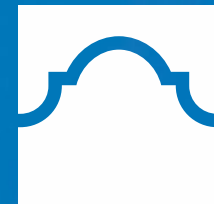
# P-TECH Programs and CTE Alignment

## Workforce Solutions Alamo

**Jennifer D. Benavides**

District Director of P-TECH Programs  
and Alamo Academies

Friday, April 11, 2025



ALAMO  
COLLEGES  
DISTRICT



# Targeted Growth Alignment



## Alamo Colleges Moonshot

To eradicate poverty through education and training.



By 2030, we will increase postsecondary enrollment of Bexar County High School graduates in a degree or credential program to 70%.



## Organizational Charge to the Chancellor

### #8 High School Programs – Improve College-Going Rates

- Increase educational attainment rates and improve economic and social mobility through a comprehensive portfolio of high school programs.
- Develop a proposal to ensure 50% of dual credit students complete a sequence of at least **15 semester credit hours** in dual credit courses by high school graduation.
- Successfully implement the downward expansion of the AlamoADVISE model to serve dually enrolled high school students.

## Our Goal

# 29x29

## STRATEGIC GROWTH GOAL

**29,000 DUAL CREDIT STUDENTS BY FALL 2029**



ALAMO  
COLLEGES  
DISTRICT



# Maximizing Impact and Value of Dual Credit

81% of students who participated in “dual enrollment (DE)” programs enrolled in college during the first year after high school compared to 70% of students overall. Among those who enrolled, 36% of DE students completed a bachelor’s degree within four years compared to 34% of students without DE experience.

-John Fink  
Community College Research Center



# Maximizing Impact and Value of Dual Credit



Young adults without a post secondary credential within six years of leaving high school have just a 12% chance of earning a living wage.

-Education Strategy Group

# Dual Credit Opportunities Across Alamo Colleges District

Dual Credit  
14 CORE Courses

ECHS  
Degree Seeking

P-TECH  
Degree or  
Credential Seeking  
Industry Focused

Alamo  
Academies



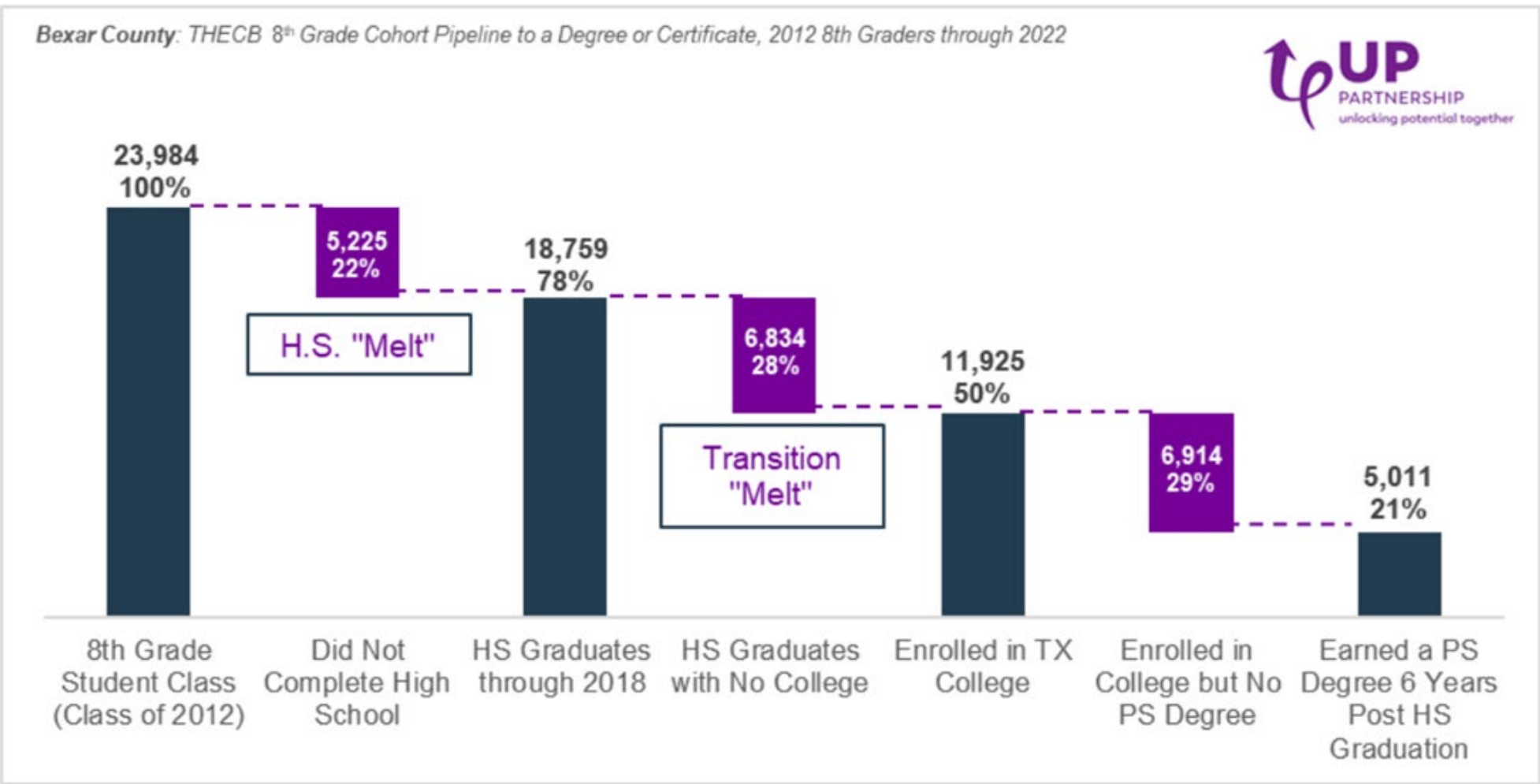
**+16,650 dual  
credit students**



ALAMO  
COLLEGES  
DISTRICT



# Maximizing Impact and Value of Dual Credit



In Fall 2024, only 10% of Bexar County high school students participated in dual credit.



ALAMO  
COLLEGES  
DISTRICT



Malcolm Baldrige  
National Quality Award  
2018 Award Recipient





ALAMO COLLEGES DISTRICT

## ALAMO COLLEGES DISTRICT DUAL CREDIT COST-SHARE ADJUSTMENTS

The Alamo Colleges District is committed to providing greater dual credit attainment to students in our community by waiving tuition and fees for high school students through cost-share agreements with K-12 partners.

**Beginning in Fall 2024, we are reducing the cost of dual credit opportunities for our public and charter school partners.** We will capitalize on House Bill 8 (HB 8) funds to reduce the cost for public and charter school partners to enroll students in dual credit courses. The changes are outlined below:

Courses taught by Alamo Colleges District Faculty		Courses taught by High School Teachers
<b>\$50/course</b> for students who qualify for FAST	<b>\$0/course</b> for the following highly transfer-applicable courses: ENGL 1301, ENGL 1302, HIST 1301, HIST 1302, and GOVT 2305	<b>\$1,000 Stipend</b> per dual credit section with 15+ students*
<b>\$100/course</b> for students who do not qualify for FAST		<b>\$600 stipend</b> per dual credit section with 8-14 students as of Census Date

### What is House Bill 8?

House Bill 8 amends the Education Code to revise the funding system for public junior college districts through the establishment of the public junior college state finance program and to provide for the establishment of the Financial Aid for Swift Transfer (FAST) program for students to enroll in dual credit courses at no cost to the student.

### What is FAST funding?

The Financial Aid for Swift Transfer (FAST) program provides funding to participating public institutions of higher education so they can offer dual credit courses to educationally disadvantaged students at no cost to these students. The Texas Education Code defines "educationally disadvantaged" as those students eligible for the national free/reduced-price lunch program. A student who meets this requirement in any of the four school years prior to the academic year in which the student is enrolled in the eligible dual credit course may be eligible for the FAST program.



### Free books through AlamoBOOKS+

All dual credit students receive free textbook and instructional material rentals through our AlamoBOOKS+ program.

### Questions?

Visit [alamo.edu/booksplus](https://alamo.edu/booksplus) for FAQs, contact information, and more.



For more information, contact:  
**Sara Mann**, Chief High School Programs Officer  
[smann33@alamo.edu](mailto:smann33@alamo.edu)

# Cost Share Model

# 29 x 29

## STRATEGIC GROWTH GOAL

### 29,000 DUAL CREDIT STUDENTS BY FALL 2029



ALAMO  
COLLEGES  
DISTRICT



Malcolm Baldrige  
National Quality Award  
2018 Award Recipient



# Dual Credit Across the Alamo Colleges



75

**Dual Credit  
Partners**



25

**Early College High  
School (ECHS)**

*\*4 New Fall 2025*



200+

**Homeschool  
Students**

Fall 2024



20

**Pathway in Technology Early  
College High Schools  
(PTECH)**

*\*4 New Fall 2025*



**Alamo Academies**

**10 School Districts**

**19 High Schools**



ALAMO  
COLLEGES  
DISTRICT



Malcolm Baldrige  
National Quality Award  
2018 Award Recipient



29

# Current Dual Credit Data



Alamo Colleges District Fall 2024	Dual Credit (Includes all DC, Academies, ECHS and P-TECH enrollments)	ECHS	P-TECH
Northeast Lakeview College (NLC)	2,525	4	0
Northwest Vista College (NVC)	5,362	0	2
Palo Alto College (PAC)	2,941	12	4
San Antonio College (SAC)	2,393	5	3
St. Philip's College (SPC)	3,436	4	11
Total	16,657	25	20

We serve 76 educational institutions in the Bexar County and surrounding areas (42-ISDs, 19-Charter, 15-Private Schools).

# Expanding Access: Coming in 2025

Alamo Colleges District Fall 2025	ECHS	P-TECH
Northeast Lakeview College (NLC)	4	3
Northwest Vista College (NVC)	2	2
Palo Alto College (PAC)	14	5
San Antonio College (SAC)	5	4
St. Philip's College (SPC)	5	9
Total	30	23



# ALAMO ACADEMIES *AT A GLANCE*



## AEROSPACE ACADEMY

### College Credit Hours

28

Level 1 Certificate: Aircraft Turbine Mechanic or Aircraft Structures Mechanic

Occupational Skills Award: Aircraft Technology

Certification: 10-Hour OSHA Card

Paid Summer Internships  
Boeing, Standard Aero, Chromalloy, Bario Aviation

Location  
St. Phillip's College Southwest Campus (SWC)



## INFORMATION TECHNOLOGY & SECURITY ACADEMY

### College Credit Hours

30

Level 1 Certificates:  
• Computer Desktop Support Technician  
• Information Technology & Security

Certification Training: TestOut PC Pro, Network Pro, Linux Pro & Security Pro

Paid Summer Internships  
University Health Systems, H-E-B, VIA

Location  
San Antonio College (SAC)



## ADVANCED TECHNOLOGY & MANUFACTURING ACADEMY

### College Credit Hours

34

Level 1 Certificates:  
• Industrial Maintenance Assistant  
• Production Tool Operator/Maintenance Associate or Manufacturing Maintenance Associate

Certifications: 10-Hour OSHA Card; MSSC Safety & Quality Certification

Paid Summer Internships  
Toyota, Pressure Systems International, Joyson

Location  
St. Phillip's College Southwest Campus (SWC)



## DIESEL TECHNOLOGY ACADEMY

### College Credit Hours

33

Level 1 Certificates:  
• Diesel Heavy Equipment  
• Advanced Diesel Heavy Equipment

Certifications: 10-Hour OSHA Card; HOLT CAT Pro Tech Certifications

Paid Summer Internships  
HOLT CAT, RDO Equipment, ASCO, ROMCO, Closner

Location  
St. Phillip's College Southwest Campus (SWC)



## HEALTH PROFESSIONS ACADEMY

### College Credit Hours

30

Graduates of Health Professions Academy are priority consideration into the Nursing Program at San Antonio College

Coursework  
Anatomy & Physiology I & II; English I & II; Lifespan; Medical Terminology; Psychology; Microbiology

Location  
San Antonio College (SAC)



ALAMO  
COLLEGES  
DISTRICT



Malcolm Baldrige  
National Quality Award  
2018 Award Recipient



32

# Academies, ECHS & P-TECH

## Industries Served Across P-TECH & Academies

Accounting
Aerospace
Agriculture
Advanced Manufacturing
Business Administration
Construction
Cybersecurity/Cloud Computing/IT
Culinary Arts
Diesel
Engineering
Healthcare (Nursing & Pharmacy)
Power Generation/Alternative Energy
Teaching
Welding

## Certificates & IBC's

Level 1 Certificates

Level 2 Certificates

Industry Based Certifications

## Associate Degrees

Associate of Arts

Associate of Science

Associate of Applied Science

# 29x29

## STRATEGIC GROWTH GOAL

29,000 DUAL CREDIT STUDENTS BY FALL 2029



# P-TECH Programs in Healthcare

P-TECH Program	ISD	Associate Degree	IHE Partner	Concentration	Start Year/ Cohorts
Fox Tech H-TECH	San Antonio ISD	AS/AAS	SAC	Biology/Nursing	2020 - 5 Cohorts
Ingram P-TECH	Ingram ISD	AS/AAS	SPC/PAC	Biology/Nursing	2021 - 4 Cohorts
Judson P-TECH	Judson ISD	Level 1 Cert.	NLC	Biology	2022 - 2 cohorts
Seguin P-TECH	Seguin ISD	Level I Cert.	NVC	Pharmacy	2022 - 2 Cohorts
East Central P-TECH	East Central ISD	AS	PAC	Biology	2022- 2 Cohorts
Boerne P-TECH	Boerne ISD	AS	SAC	Biology	2024- 1 Cohort
Jourdanton P-TECH	Jourdanton ISD	AS/AAS	SAC	Biology/Nursing	2025 – 0 cohort

# P-TECH Programs in Information Technology

P-TECH Program	ISD	Associate Degree	IHE Partner	Concentration	Start Year/ Cohorts
Champion HS Cybersecurity	Boerne ISD	AAS	NVC	Cybersecurity	2022-3 cohorts
John F. Kennedy HS	Edgewood	AAS	SPC	Cyber Defense/ Computer Science	2021-4 cohorts
Ingram Tom Moore HS	Ingram ISD	AAS	SPC	IT/Cybersecurity Specialist	2021-4 cohorts
Poteet HS	Poteet ISD	AAS	PAC	Networking & Cloud Computing	2023-2 cohorts
South San HS	South San ISD	AAS	PAC	Data Science/ Cybersecurity	2024-1 cohort
Hill Country College Prep	Comal ISD	AAS	NLC		2025

# P-TECH Programs in Advanced Manufacturing

P-TECH Program	ISD	Associate Degree	IHE Partner	Concentration	Start Year/ Cohorts
Highlands HS	San Antonio ISD	AAS	SPC	Automated Industrial Processing/ Mechatronics	2021-4 cohorts
Lytle HS	Lytle ISD	AAS	SPC	CNC Manufacturing Technician	2019-6 cohorts

# Industry & Workforce Alignment in P-TECH

- Designed to local workforce needs and to high-wage industries.
- TEA CTE Program of Study Alignment
- Advisory Board with IHE & strong industry partners
- Internships/Apprenticeships/Mentorships
- Summer Bridge Focused on Career Exploration & Work-Based Learning
- Intense Work-Based Learning Plans integrated throughout the year and embedded in curriculum; layered per cohort level

**29x29**  
**STRATEGIC GROWTH GOAL**  
**29,000 DUAL CREDIT STUDENTS BY FALL 2029**



ALAMO  
COLLEGES  
DISTRICT



# P-TECH Blueprint

## P-TECH

- Benchmark 1: School Design
  - Benchmark 2: Partnerships
  - Benchmark 3: Target Population
  - Benchmark 4: Academic Infrastructure
  - Benchmark 5: Student Support
- Benchmark 6: Work-Based Learning

# Texas Education Agency

## Outcomes Based Measures

### • ACCESS

- At-Risk Students\*
- Economically-Disadvantaged Students\*
- Emergent Bilingual
- Students with Disabilities

### • ACHIEVEMENT

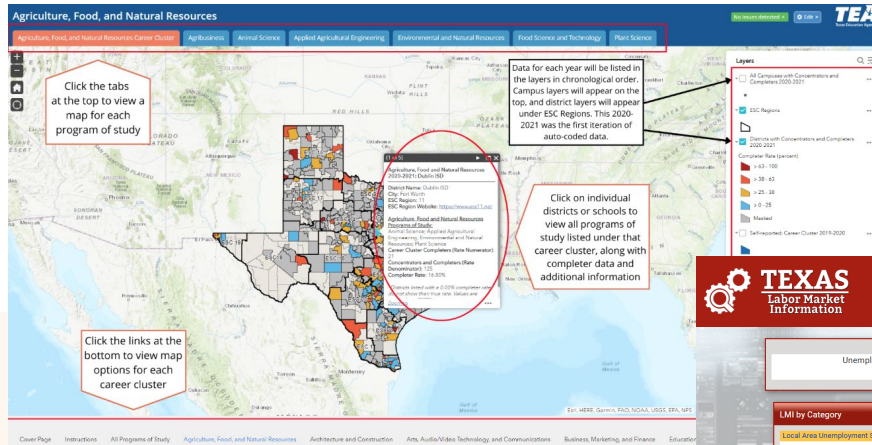
- Algebra I EOC Assessment
- English II EOC Assessment
- College Readiness in Math and ELAR (TSIA)
- High School Graduation Rate
- CTE Program Status by 11<sup>th</sup> Grade
- CTE Program Status by Graduation

### • ATTAINMENT

- Earn 3 College credits
- Earn 9 college credits
- Earn 15 college credits
- Earn a Certificate or Associate Degree
- Earn an Industry-Based Certificate
- Persistence

# Creating P-TECH's

## Regional Data & Local Industry Offerings



### P-TECH Monitor

## A Data Center built for Texas P-TECH Schools

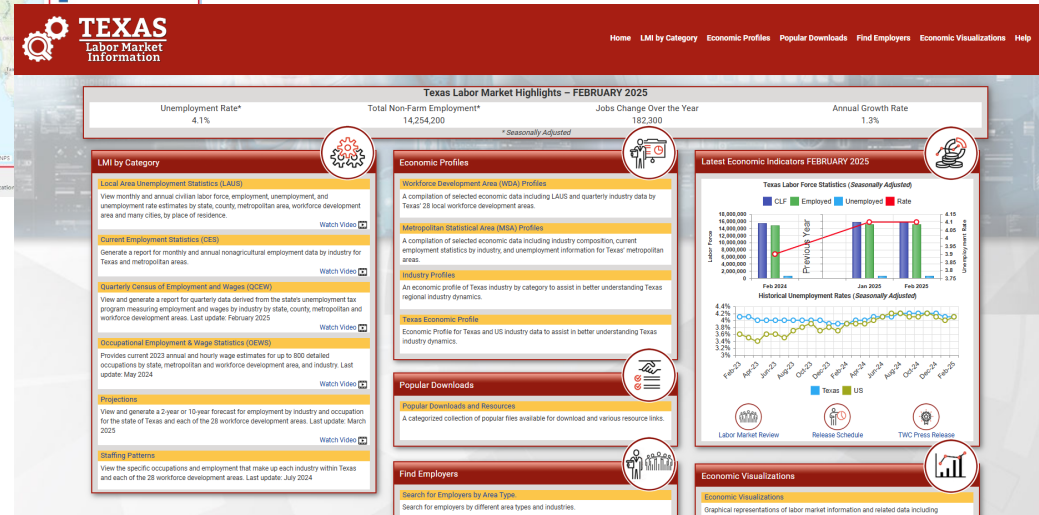
CareerCraft's P-TECH Monitor gives your school and district the ability to collect, monitor and respond to the P-TECH Blueprint Benchmarks. P-TECH Monitor helps your school meet Texas Education Agency (TEA) outcomes-based measures for access, achievement and attainment.

Built based on the Texas Pathways in Technology Early College High School Blueprint



# Data, Data, Data

- TWC Labor Market & Career Information
- Career Craft
- TEA CTE Mapping Application
- Local Chamber Input
- Local Surveys



# TEA Programs of Study



## Agriculture, Food, and Natural Resources

- Agriculture Business, Leadership, and Communications
- Animal Science
- Agricultural Technology and Mechanical Systems
- Environmental and Natural Resources
- Food Science and Technology
- Plant Science



## Architecture and Construction

- Architectural Drafting and Design
- Carpentry
- Construction Management and Inspection
- Electrical
- HVAC and Sheet Metal
- Masonry
- Plumbing and Pipefitting



## Arts, Audio Visual Technology and Communications

- Graphic Design and Interactive Media
- Digital Communications
- Printing and Imaging (Regional Program of Study)



## Business, Marketing, and Finance

- Accounting and Financial Services
- Business Management
- Entrepreneurship
- Marketing and Sales
- Real Estate **NEW**
- Retail Management (Regional Program of Study)



## Education and Training

- Early Learning
- Teaching and Training



## Energy

- Oil and Gas Exploration and Production
- Refining and Chemical Processes
- Renewable Energy



## Health Science

- Exercise Science, Wellness and Restoration (Medical Therapy & Exercise Science & Wellness Combined)
- Health Informatics
- Diagnostic & Therapeutic Services (Healthcare Diagnostics & Healthcare Therapeutic, and courses from Medical Therapy combined)
- Nursing Science
- Biomedical Science



## Hospitality and Tourism

- Culinary Arts
- Lodging and Resort Management
- Travel, Tourism and Attractions

# 14 CTE Workforce Domains; 65 Programs of Study



## Human Services

- Family and Community Services
- Health and Wellness
- Cosmetology and Personal Care Services (Regional Program of Study)



## Information Technology

- Information Technology Support and Services
- Networking Systems
- Web Development
- Cybersecurity
- Programming and Software Development



## Law and Public Service

- Fire Science (previously Emergency Services)
- Government and Public Administration
- Law Enforcement
- Legal Studies



## Manufacturing

- Robotics and Automation Technology
- Manufacturing Technology
- Welding
- Industrial Maintenance (from Regional to Statewide)
- Electronics Technology (Regional Program of Study)
- Advanced Manufacturing and Industrial Technology (Regional Program of Study)



## Engineering **NEW**

- Engineering Foundations
- Mechanical and Aerospace Engineering **NEW**
- Electrical Engineering **NEW**
- Civil Engineering **NEW**
- Geospatial Engineering and Land Surveying (Regional Program of Study)
- Drone (Unmanned Vehicle) (Regional Program of Study)

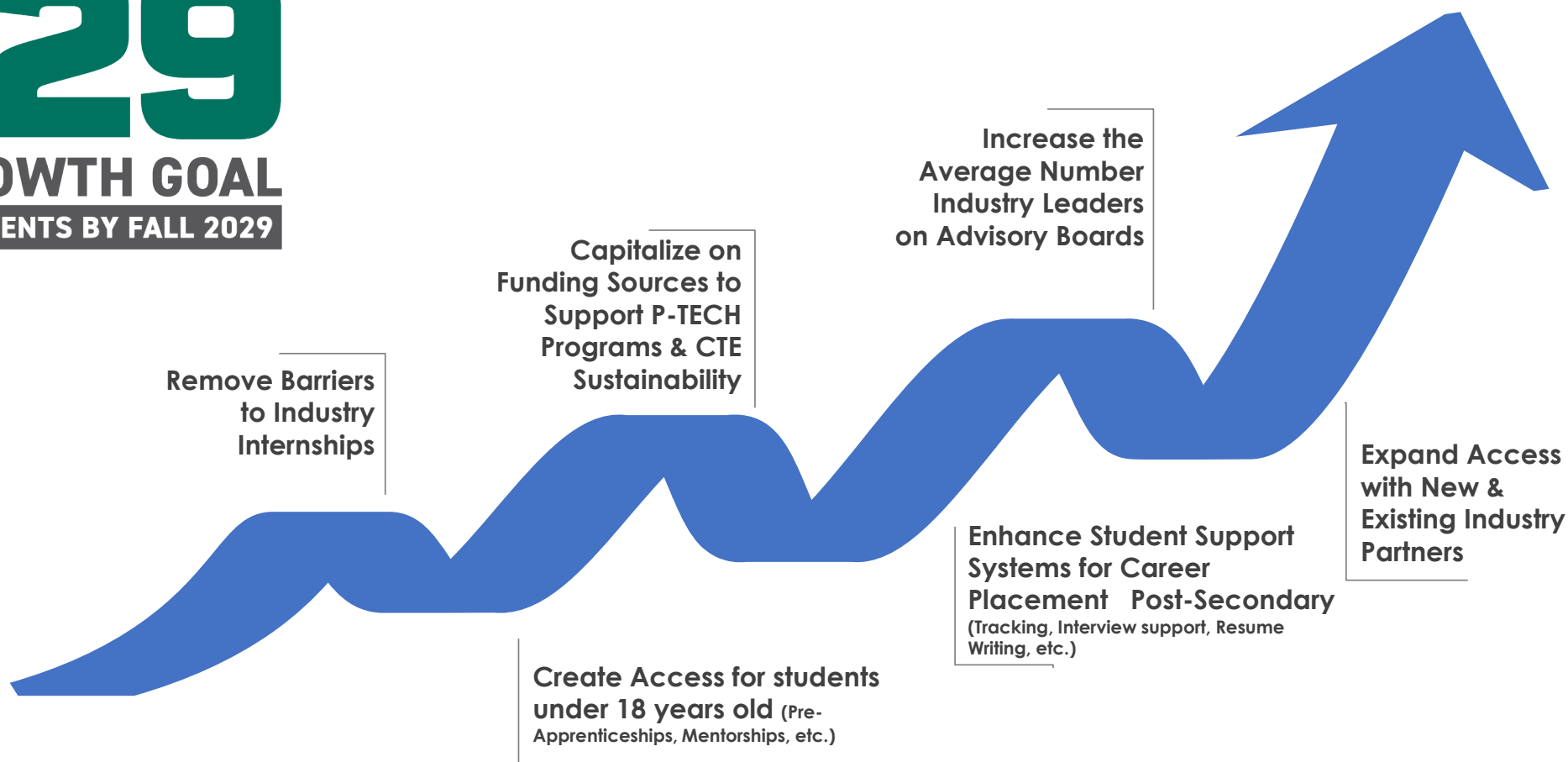


## Transportation, Distribution, and Logistics

- Automotive and Collision Repair
- Aviation Maintenance
- Diesel and Heavy Equipment Maintenance and Commercial Drivers
- Distribution, Logistics, and Warehousing
- Aviation (Pilots) (from Regional to Statewide)
- Maritime (Regional Program of Study)

# How do we Strengthen Support of P-TECH Programs?

**29x29**  
**STRATEGIC GROWTH GOAL**  
**29,000 DUAL CREDIT STUDENTS BY FALL 2029**



ALAMO  
COLLEGES  
DISTRICT



Malcolm Baldrige  
National Quality Award  
2018 Award Recipient



Thank you.  
jbenavides23@alamo.edu



# High School Programs

**DR. ABEL  
GONZALES**  
DISTRICT DIRECTOR  
OF ECHS  
PROGRAMS

AGONZALES106@ALAMO.EDU  
210-250-0971

**DR. MONICA  
VILLARREAL**  
DIRECTOR OF  
ALAMO COLLEGIATE  
NETWORK

MVILLARREAL514@ALAMO.EDU  
210-550-0314

**SARA MANN**  
CHIEF HIGH  
SCHOOL  
PROGRAMS  
OFFICER

SMANN33@ALAMO.EDU  
830-391-6369

**DR. TAMARA  
ANDERSON**  
DISTRICT DIRECTOR  
OF DUAL CREDIT

TFLORES9@ALAMO.EDU  
210-710-2592

**JENNIFER  
BENAVIDES**  
DISTRICT DIRECTOR  
OF P-TECH  
PROGRAMS &  
ALAMO ACADEMIES

JBENAVIDES23@ALAMO.EDU  
210-710-0330



**Alamo Colleges District**

*Dual Credit*  
**LEADERS**





# In Person Youth Success Story

Victoria Rodriguez, Director of Workforce Services



# Jesus Cardenas – From Struggles to Success: Jesus' Journey from Adversity to Advocacy

---



- **Career Transition & Determination** – Jesus Cardenas, a parenting youth with a criminal background, sought a fresh start after relocating from Laredo to San Antonio for better work and education opportunities.
- **Youth Program & Training** – He joined the YES! Program in October 2022 and completed a Web Development training program at UTSA in July 2023, gaining valuable skills and earning a \$250 incentive.
- **Higher Education Goals** – In August 2023, he enrolled at Northwest Vista College to study Philosophy, with long-term plans to attend law school and earn a Bachelor's degree.
- **Professional Growth** – With guidance from his Career Navigator, he secured a Paralegal Assistant position at Rivera Hernandez Campos, PLLC, earning \$18/hour, and contributes his time to The Oasis Center, a non-profit organization.
- **Balancing Work, Studies & Family** – While managing two part-time jobs and parenting, he maintains a 4.0 GPA and is set to graduate in May with an Associate's degree in Business, showcasing the impact of the Youth Program on young professionals' success.



“This program gave me the motivation and confidence to pursue a career I’m passionate about. It showed me that with the right support, I could achieve more than I ever thought possible. I would encourage anyone to never stop looking for opportunities in life, because they’re out there waiting for those who are willing to take that leap of faith”



# Questions





# Youth Updates

Victoria Rodriguez, Director of Workforce Services



# Youth Program Briefing and Performance

---





# PLANNED PARTICIPANT SUMMARY

PPS WIOA YOUTH 2024-2025	NEW				YEAR END GOAL	YEAR END GOAL %
	Q1 OCT-DEC'24	Q2 JAN-MAR'25	Q3 APR-JUN'25	Q4 JUL-SEP'25		
Urban Participants Planned	89	178	267		356	
Actual Participants Served	210	33			243	68%
Rural Participants Planned	52	105	157		210	
Actual Participants Served	96	13			109	52%
Work Experience Career Opportunities Planned	50	101	150		201	
Actual	60	30			90	45%
Education/Training Planned	15	29	43		57	
Actual	26	2			28	49%
Supportive Services Planned	67	135	202		269	
Actual	221	87			308	114%



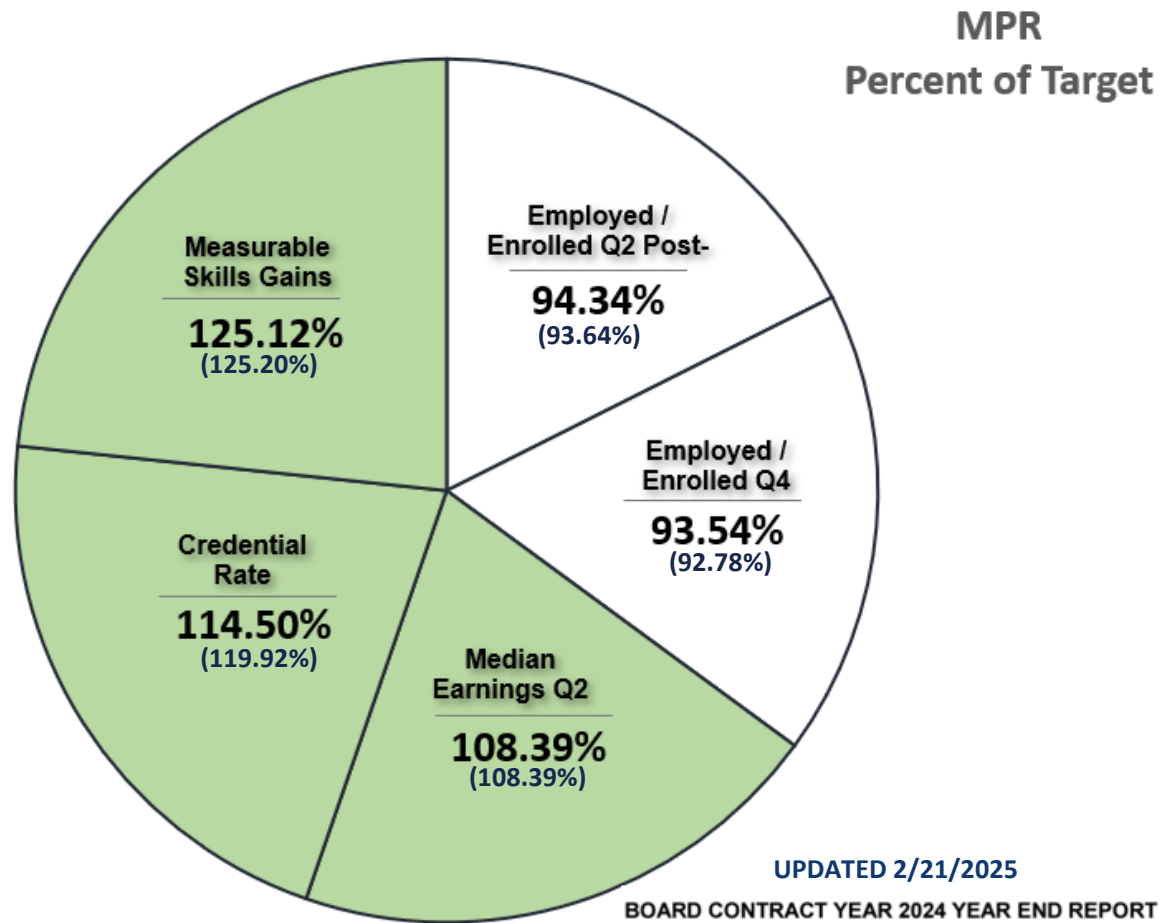
IN-SCHOOL & OUT-OF SCHOOL YOUTH		
Actual Urban Participants Served	65 ISY	178 OSY
Actual Rural Participants Served	53 ISY	56 OSY

As of February 28, 2025



# Performance Accountability

Green = +P   White = MP   Yellow = MP but At Risk   Red = -P



## Q2 and Q4 Post-Exit Employed and Enrolled

The percentage of Title I Youth program participants who are in education or training activities, or in unsubsidized employment, during the second and fourth quarter after exit from the program.

## Measurable Skill Gains:

The percentage of program participants who, during a program year, are in an education or training program that leads to a recognized postsecondary credential or employment.

## Median Earnings:

Median earnings of participants who are in unsubsidized employment after exit from the program.

## Credential Attainment:

The percentage of those participants enrolled in and education or training program who attain a recognized postsecondary diploma or its equivalent during participation in or within one year after program exit.



# Questions



# Career Exploration Events

---



# PY25 Career Exploration Youth Events



The graphic is a vertical calendar for PY25 Career Exploration Youth Events. It features a blue background with white and yellow text. At the top, the title 'PY25 Career Exploration Youth Events' is in large white letters. To the right is a logo with a map of Texas and the text 'YOUR CAREER. YOUR STORY. JOBS Y'ALL'. Below the title, four event boxes are listed, each with a date, month, and year on the left, and event details on the right. The events are: 24 FEB 2025 CTE Showcase, 25 APRIL 2025 FIESTA OF OPPORTUNITIES, 8 MAY 2025 World of Work Youth Apprenticeship Week, and 24 JULY 2025 Interns Unite! National Intern Day. Some details are in red text.

**PY25 Career Exploration Youth Events**

**24 FEB 2025** **CTE Showcase**

- Education Service Center (ESC-20)
- 400 Middle School Students
- 15 CTE Programs/10 Community Orgs

**25 APRIL 2025** **FIESTA OF OPPORTUNITIES**

- Westside Education & Training Center
- 10:00 AM - 2:30 AM
- Target Audience: 200 Opportunity Youth

**8 MAY 2025** **World of Work Youth Apprenticeship Week**

- Devine Community Center
- Target Audience 200 Youth from SA Rodeo Ag-Mechanics Youth Rural Schools

**24 JULY 2025** **Interns Unite! National Intern Day**

- Location TBD

## OVERALL STRATEGIC GOALS:



Inspire Youth: Educate about diverse career options locally and globally



Remove Barriers: Promote YES! Program that addresses employment obstacles



Align with Local Plan: Ensure events meet community workforce needs



\* Updates to initial calendar in red



# CTE Showcase Recap

468 Students in Attendance

15 Employers and 2 Community Organizations

11 HS CTE Programs Showcased CTE Program of Study

8 Schools Participated in Both Urban/Rural

- Leal Middle School
- Advanced Learning Academy
- McAuliffe Middle School
- Kingsborough Middle School
- CAST Middle School
- Pearsall HS
- Somerset Junior High
- Jubilee Academy



# Coming Up...Fiesta of Opportunities

## April 25, 2025



**FIESTA OF OPPORTUNITIES:**  
**Youth Expo & Hiring Fair**

April 25, 2025 | 10:00 AM - 2:30 PM  
WESTSIDE EDUCATION & TRAINING CENTER

  
**Workforce Solutions**  
ALAMO  
BUILDING BUSINESS • BUILDING CAREERS

 **ALAMO COLLEGES DISTRICT**  
Westside Education & Training Center





# What's Next?...World of Work Event

## May 8<sup>th</sup>, 2025



**EXPLORE. TRAIN. EARN.**

- Learn about "Earn While You Learn" opportunities
- Meet with employers in high demand industries
- See a Business Attire Fashion Show



Kickstart Your  
Future Here

For more information, please contact any  
Workforce Solutions Alamo Career Center.  
Call: (210) 224-4357

[www.workforcesolutionsalamo.org](http://www.workforcesolutionsalamo.org)

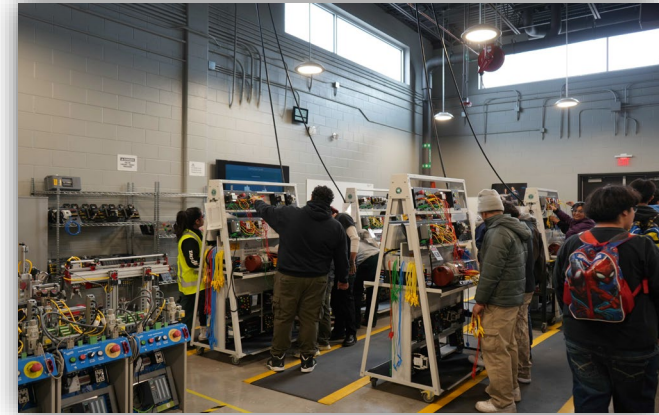


**Thursday, May 8, 2025**  
**10:00am - 2:00pm**  
**Devine Community Center**  
**200 E Hondo Ave.**  
**Devine, TX 78016**

- In celebration of Youth Apprenticeship Week :
  - May 4th -8th
- Rural Effort
- Target: 200 Youth from schools that participated in SA Rodeo Ag-Mechanics Tradeshow
- Industry Focused: Agriculture, Welding, Construction, and other skill trades

# TX FAME AMT OPEN HOUSE RECAP

## February 20, 2025



86 STUDENTS IN  
ATTENDANCE!



# Youth Model Update

---





# Timeline (Old) for reference only

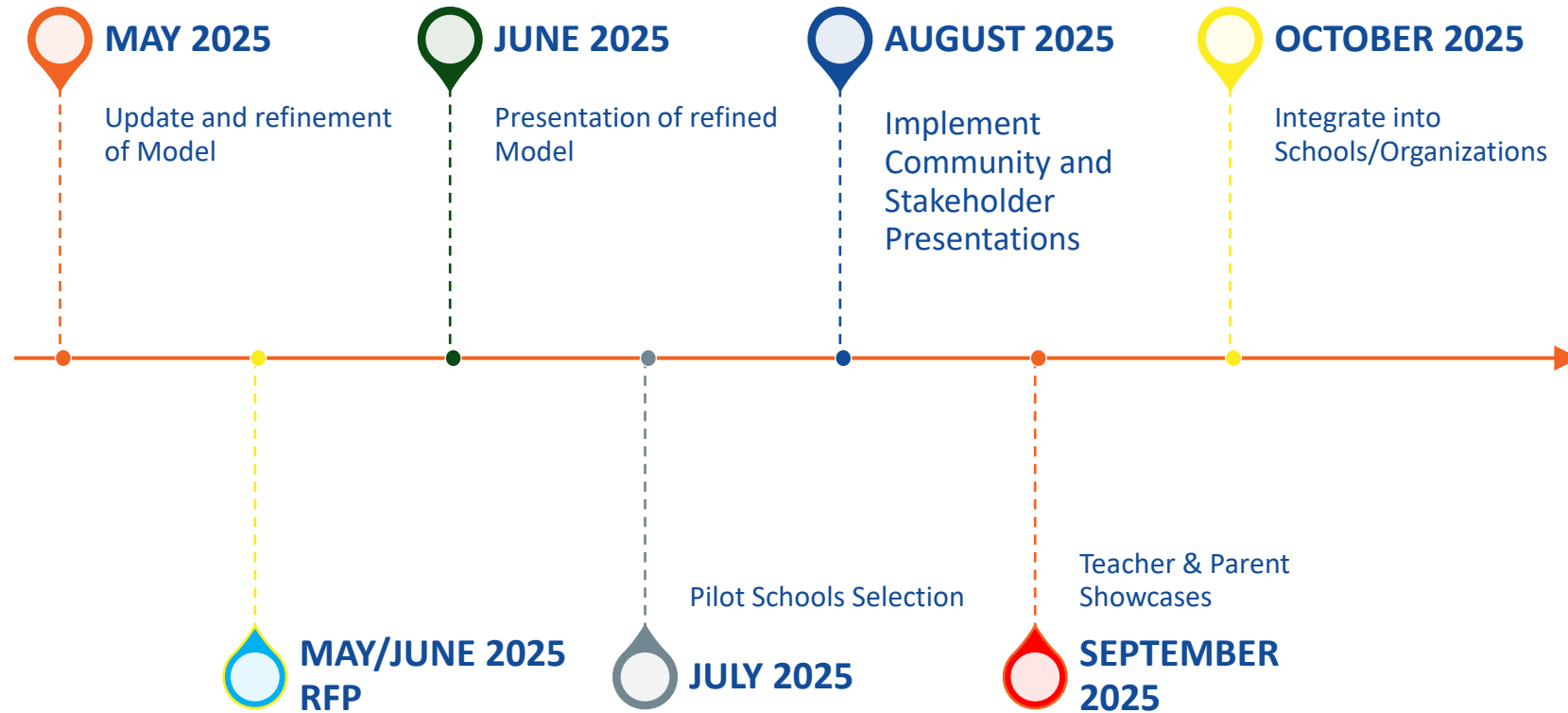




# Timeline – New (Proposed)



Pathways. Opportunities. Possibilities.





# Questions





# CEO Report

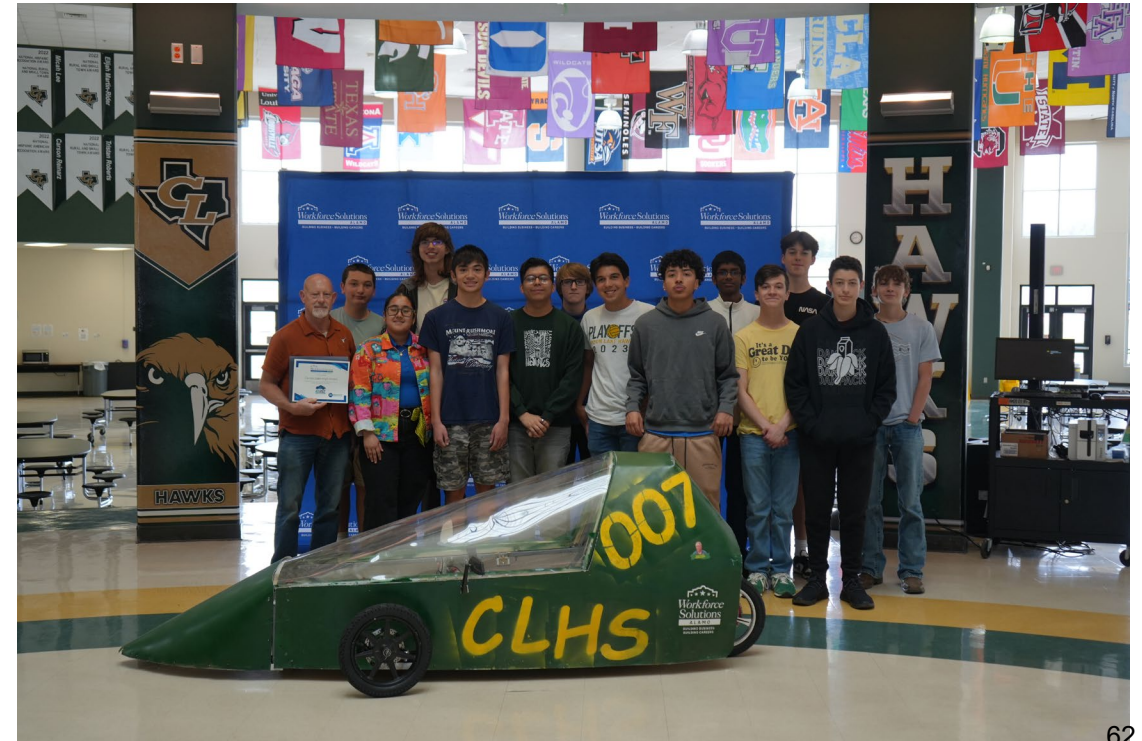
Adrian Lopez





# ACE Race Car Decal Presentation

## Canyon Lake HS (Comal County)





# ACE Race Car Decal Presentation

## DILLEY HS (FRIO County)





# ACE Race Car Decal Presentation

## KARNES CITY HS (KARNES County)





# ACE Race Updates



**April 12, 2025**

**San Antonio Police Academy**

6:00 am- 5:00 pm

**VOLUNTEERS  
NEEDED**

SCAN QR TO VOLUNTEER

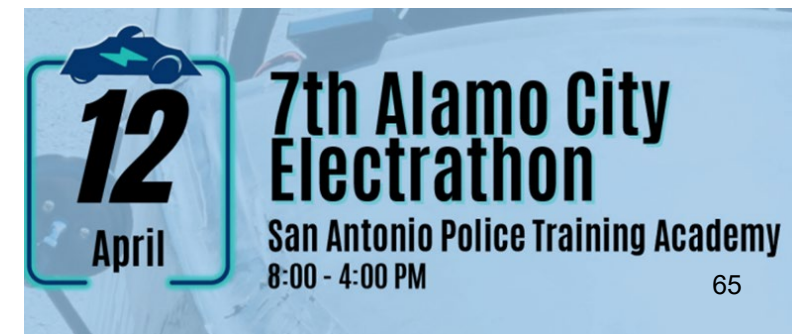


**ACE Race Press  
Conference Wednesday,  
April 9<sup>th</sup> San Antonio  
Police Training Academy  
10am – 11am**



**43 TOTAL  
REGISTERED  
CARS!**

**ACE Race Day:**



**7th Alamo City  
Electrathon**

**San Antonio Police Training Academy  
8:00 - 4:00 PM**



# Questions





# Chair Report

Anthony Magaro, Committee Chair



# Youth Committee Member Updates

---





# Questions



# Thank you!

